

iRiver
iFP-300 Series

www.iRiver.com

MP3
DIGITAL AUDIO
FM
TUNER

Plays
Windows
Media™

Instruction Manual

MP3 PLAYER/FM TUNER
Model iFP-300 Series



Firmware Upgradable

Thank you for your purchase.
Please read this manual carefully
before using your new player.

www.iRiver.com

THIS DEVICE COMPLIES WITH PART 15 OF THE FCC RULES. OPERATION IS SUBJECT TO THE FOLLOWING TWO CONDITIONS: (1) THIS DEVICES MAY NOT CAUSE HARMFUL INTERFERENCE, AND (2) THIS DEVICE MUST ACCEPT ANY INTERFERENCE, RECEIVED, INCLUDING INTERFERENCE THAT MAY CAUSE UNDESIRE OPERATION.

Note : This equipment has been tested and found to comply with the limits for a Class B digital device, pursuant to part 15 of the FCC Rules. These limits are designed to provide reasonable protection against harmful interference in a residential installation. This equipment generates, uses and can radiate radio frequency energy and, if not installed and used in accordance with the instructions, may cause harmful interference to radio communications. However, there is no guarantee that interference will not occur in a particular installation. If this equipment does cause harmful interference to radio or television reception, which can be determined by turning the equipment off and on, the user is encouraged to try to correct the interference by one or more of the following measures :

- Reorient or relocate the receiving antenna.
- Increase the separation between the equipment and receiver.
- Connect the equipment into an outlet on a circuit different from that to which the receiver is connected.
- Consult the dealer or an experienced radio/TV technician for help.

NOTE: THE MANUFACTURER IS NOT RESPONSIBLE FOR ANY RADIO OR TV INTERFERENCE CAUSED BY UNAUTHORIZED MODIFICATIONS TO THIS EQUIPMENT. SUCH MODIFICATIONS COULD VOID THE USER'S AUTHORITY TO OPERATE THE EQUIPMENT.

- URL : www.iRiver.com
- Find information on our company, products, and customer and technical support.
- Update your player with firmware downloads. Firmware upgrades offer support for new CODECS and deliver new product features.
- Consult the product FAQ.
- Register your iRiver product online so that our Customer Service is able to provide support as efficiently as possible.

iRiver Limited does not assume any responsibility for errors or omissions in this document or make any commitment to update the information contained herein.

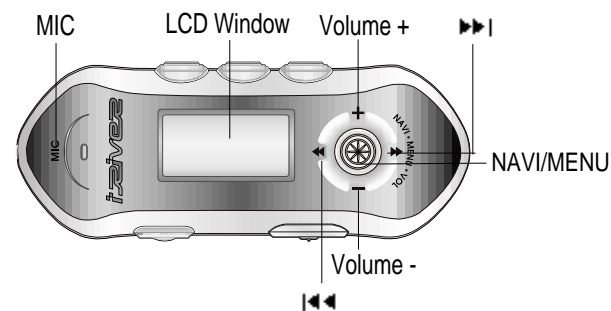
iRiver is a registered trademark of iRiver Limited in the Republic of Korea and /or other countries and is used under license. Microsoft Windows Media and the Windows Logo are trademarks or registered trademarks of Microsoft Corporation in the United States and /or other countries. All other brand and product names are trademarks of their respective companies or organization. All other product names may be trademarks of the companies with which they are associated.

© 1999-2003 iRiver Limited. All right reserved.

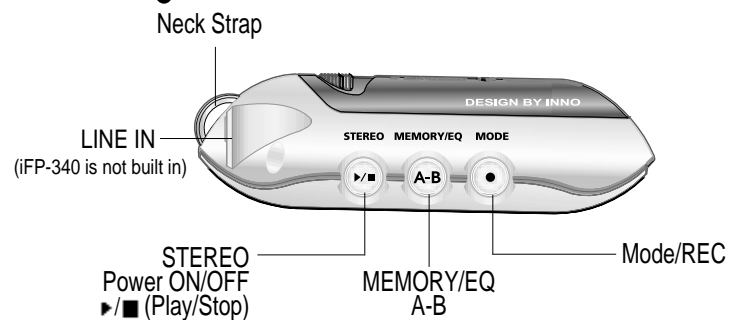
- **Unique Design**
- **Multi-Codec Player**
: Supports MP3, WMA, ASF formats.
- **Firmware Upgrade**
: Provides the latest updated features via firmware upgrade.
- **Graphic LCD supporting Multiple Languages**
: iFP-300 Series comes with graphic LCD which can support multiple languages
- **FM Function (not supported on iFP-340):**
You can easily listen to FM stations and set your favorite stations by using Auto Preset and Frequency Memory functions.
- **6 Preset EQ** : Normal, Rock, Jazz, Classic, U Bass, Metal
- **Xtreme EQ**
Make your EQ as the way you like by adjusting five frequency zones. Each frequency zone's bandwidth can be set from -12dB to +12dB with 3 dB stepping.
- **GUI (Graphic User Interface) MENU SYSTEM**
- **Easy Navigation**
The simple navigation makes it easy to find any song.
- **Supports 8 levels of subfolders, 500 folders total and up to 1500 files at one time.**
- **Create your own playlists.**
- **Support MP3 Direct Encoding (not supported on iFP-340):**
11.025KHz ~44.1KHz, 8Kbps ~ 320Kbps
- **Record FM Radio, Voice, or line-in from another device**
Voice record level is automatically controlled by AGC function. (iFP-340 feature only voice record)
- **Convenient neck strap.**

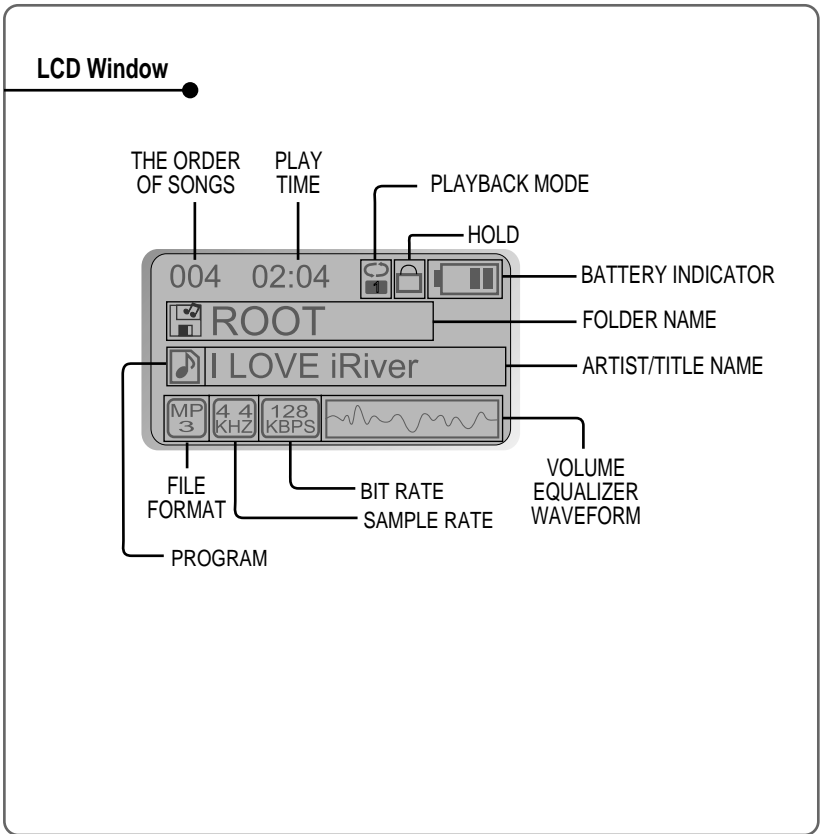
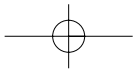
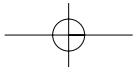
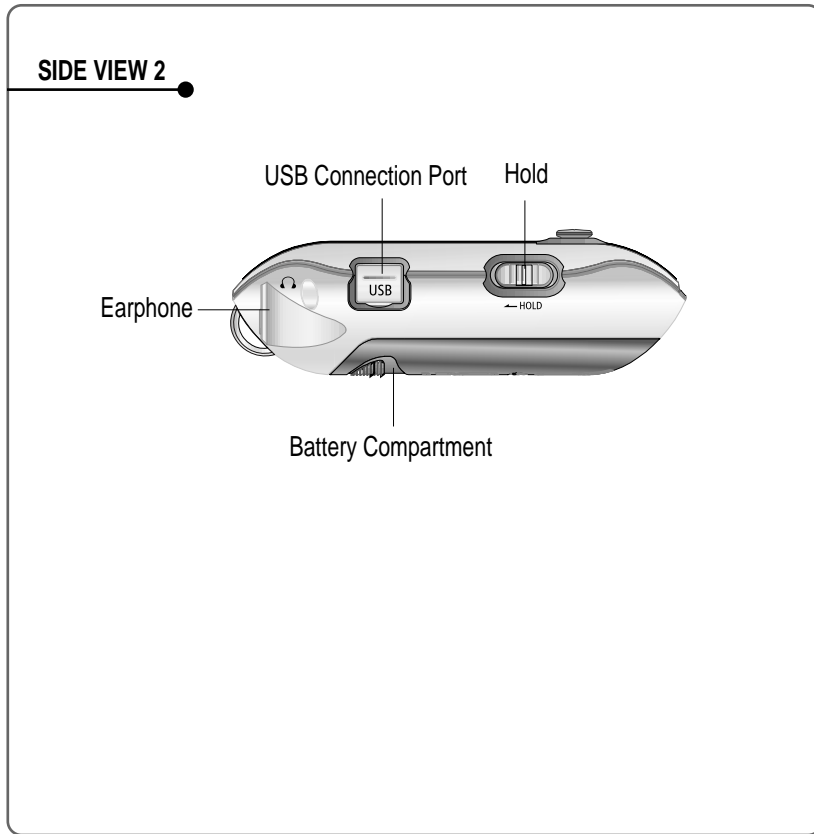
| | |
|--------------------------------------|-------|
| INTERNET..... | 2 |
| UNIQUE FEATURES..... | 3 |
| CONTENTS..... | 4 |
| 1. LOCATING THE CONTROLS | |
| FRONT VIEW, SIDE VIEW 1..... | 5 |
| SIDE VIEW 2..... | 6 |
| LCD WINDOW..... | 7 |
| 2. BASIC OPERATION | |
| BASIC OPERATION..... | 8-11 |
| INSTALLING SOFTWARE ON THE PC..... | 12-16 |
| BASIC SOFTWARE OPERATION..... | 17 |
| PLAYER & FILE TRANSFERRING..... | 18-23 |
| HANDLING FOLDERS & FILES..... | 24-27 |
| ADDITIONAL FUNCTIONS..... | 28-31 |
| LISTENING TO MUSIC..... | 32-33 |
| OPERATING THE FM TUNER..... | 34-37 |
| RECORDING FM..... | 38 |
| RECORDING VOICE..... | 39-40 |
| RECORDING EXTERNAL AUDIO SOURCE..... | 41-44 |
| 3. USEFUL FEATURES | |
| NAVIGATION (SEARCHING)..... | 45-46 |
| PLAYBACK MODE..... | 46-47 |
| PROGRAM MODE..... | 48-50 |
| EQ MODE..... | 51 |
| MENU..... | 52-62 |
| 4. ADDITIONAL INFORMATION | |
| POWER SUPPLY..... | 63 |
| TROUBLE SHOOTING..... | 64 |
| PRECAUTIONS..... | 65 |
| ACCESSORIES..... | 66 |
| SPECIFICATIONS..... | 67 |

FRONT VIEW

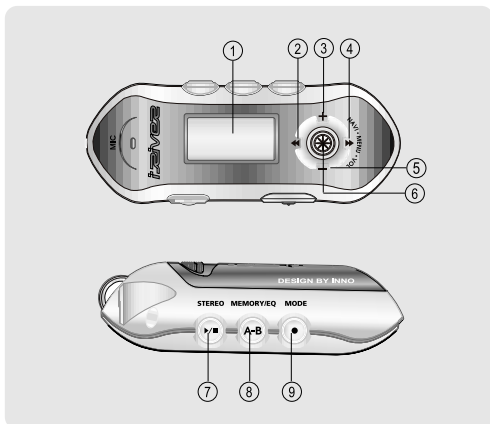


SIDE VIEW 1

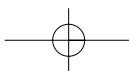
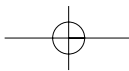




* iFP-340 doesn't feature FM Tuner or Line-in recording.



- | | |
|--|---|
| <ol style="list-style-type: none"> 1. LCD window. 2. To select the previous music for MP3 or station for FM. 3. To increase volume. 4. To select the next music for MP3 or station for FM. 5. To decrease volume. 6. To select NAVI/MENU function. 7. To start or stop playback for MP3, to select mode for FM or turn off. | <ol style="list-style-type: none"> 8. To select EQ mode, A-B repeat or memory stations for FM automatically. EQ : NORMAL → ROCK → JAZZ → CLASSIC → U BASS → METAL → Xtrm EQ 9. To select function, playback mode, or record/stop recording. |
|--|---|



■ To adjust the volume
Press + on volume button to increase volume and press – on button to decrease volume.



■ Selecting FM Mode when listening FM :



NAVIGATION



Press NAVI/MENU button and find the desired track by pressing the VOL + or VOL – button. To select the track, press the NAVI/MENU button, ►► or the PLAY/STOP button.

To move to the upper folder, push the ◀◀ switch. If there is no upper folder, NAVIGATION stops.



MENU

A long press of the **NAVI/MENU** button will enter the menu system.



- 1 Scrolling between menus : Press **||◀** and **▶||**.
- 2 Exit : Push the **VOL -** switch down or hold down the **NAVI/MENU** button.
- 3 Select Function: Press the **NAVI/MENU** button.

MODE

MODE






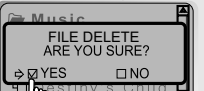
While an MP3 file is playing, press **MODE/REC** to activate selected modes, such as Repeat or Shuffle.

Press and hold the **MODE/REC** button:
You can select MP3 or FM or voice or Line-in recording functions
(Play mode is automatically activated when MP3 is selected).



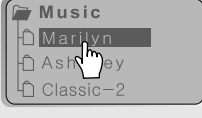
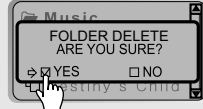


* iFP-340 doesn't feature FM Tuner or Line-in recording.

DELETING FILES ON THE PLAYER

- 1 Stop playback. 
- 2 Click the "NAVI/MENU" button. 
- 3 Select the files to delete by using **VOL +** or **VOL -**. 
- 4 Click the "MODE" button. "FILE DELETE ARE YOU SURE?" is displayed on the LCD. Select "YES" by using **||◀** and **▶||** to delete. Then click **NAVI/MENU** button. 

DELETING FOLDERS ON THE PLAYER

- 1 Stop playback. 
- 2 Click the "NAVI/MENU" button. 
- 3 Select the folder to delete. 
- 4 Click the "MODE" button. "FOLDER DELETE ARE YOU SURE?" is displayed on the LCD. Select "YES" by using **||◀** and **▶||** to delete. Then click **NAVI/MENU** button. 

NOTE You can only delete a blank folder. In order to delete a folder, you must first delete the files in the folder.

- Insert the Installation CD into the CD-ROM drive. The following screen appears after inserting the CD.



- If installation doesn't automatically begin, execute the "setup.exe" file of the installation CD. The installation program will begin.
- The installation CD contains the following contents :
 - Device Driver
 - iRiver Music Manager
- The player can store MP3 files or files of any type. You can upload files, other than music (MP3, WMA, ASF), to the PC using the iRiver Music Manager Program.
- Download latest versions of drivers and iRiver Music Manager at www.iRiver.com

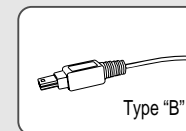
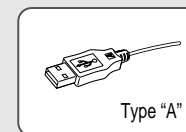
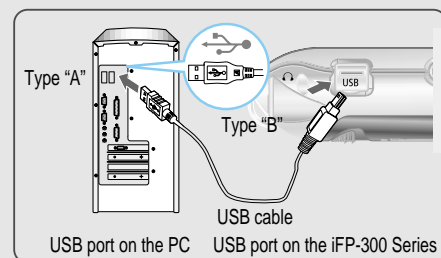
- The users having O/S more than Microsoft Windows 2000 are recommended to log in as Administrator privileges and install iRiver Music Manager.

System Requirements

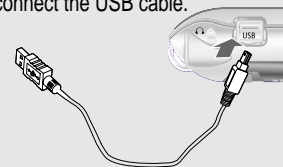
- Pentium 133MHz or faster
- CD-ROM drive
- USB port
- 10MB free hard disk space
- Window 98SE / ME / 2000 / XP

To install "New hardware"

- 1 Connect the USB cable (provided) to the USB port of your computer.



- 2 Turn on the player, remove the protective cover of USB port, and connect the USB cable.



- 3 "USB CONNECTED" will appear on the LCD of the player.



NOTE Connect the USB cable to the PC after playback stops to avoid errors.

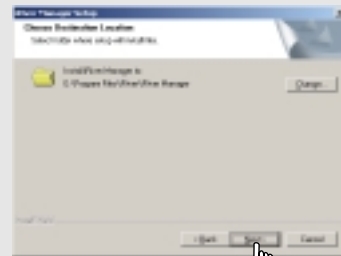
1 Click "Next" after selecting the language to install.



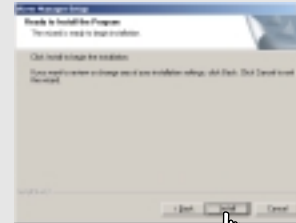
2 Click "Next" to Install iRiver Music Manager.



3 Select the folder to Install. Click "Next".



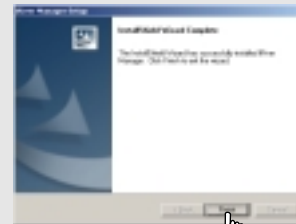
4 Click "Install" to install.



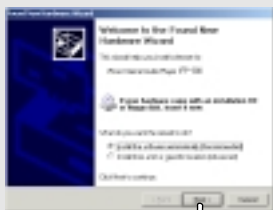
5 Installation is progressing.



6 Click "Finish" Completed the installation of "New hardware".

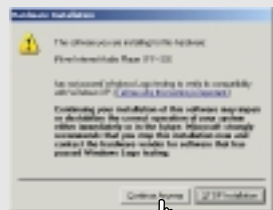


When installing in Windows XP

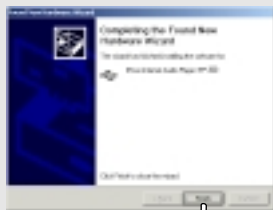


- 1 After installation of Manager that is included in the install CD and connect your player with PC, the pop-up window like left image comes up. Select 'Install the software automatically (Recommended)' and click 'Next'.

- 2 When the warning screen like below image pops up, please click 'Continue Anyway'. (The CD comes with iRiver player is iRiver's official software to ensure the safe installation of product.)



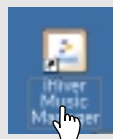
- 3 Click 'Finish' will complete the new hardware installation.



* O/S with windows 98 se, windows me, windows 2000 do not have to install device driver with separate.

1. Basic operation

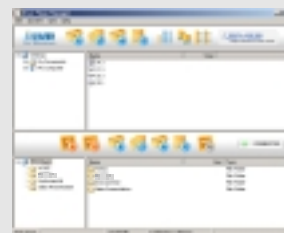
- 1 Double click the iRiver Music Manager icon on the PC to start the Manager program.



- 2 iRiver Music Manager version installed is displayed.



- ▼ Initial activated iRiver Music Manager window

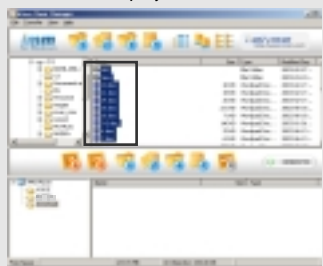


2. PLAYER & FILE TRANSFERRING

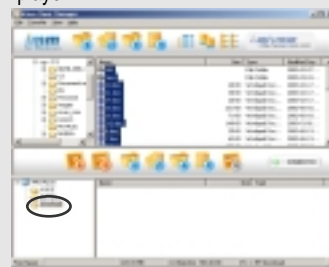
1) Downloading from the PC

Activate the Manager program after connecting the USB cable between the player and PC.

- 1 Select the folders or files on the PC to transfer to the player.



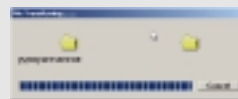
- 2 Select the destination folder on the player.



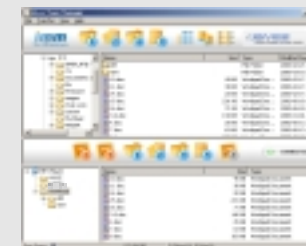
- 3 Click the "Download" icon or select "Download" in the Transfer menu to transfer the selected files to the player.



- 4 Download is processing.



- 5 Download is completed.



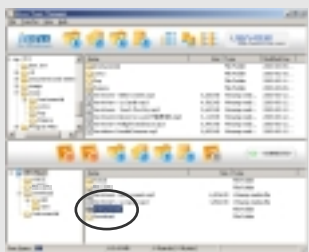
CAUTION

- * Files with a name over 127 English characters (Korean: 63 characters) will not transfer.
- * Files over 511 English characters (including path name and file names) will not transfer.
- * The ROOT folder is limited to 1024 (iFP-340 : 256) files and folders total.
Subfolders do not have a limit to the number of files.

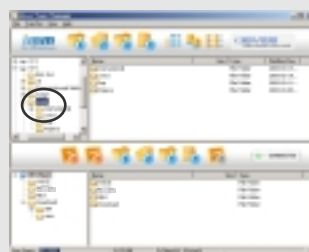
2) Uploading to the PC

Activate the Manager program after connecting the USB cable between the player and PC.

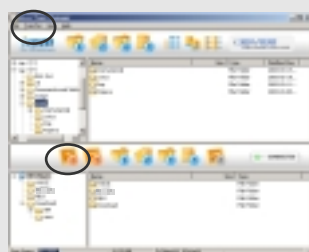
- 1 Select files or folders in the player to save.



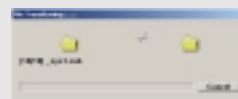
- 2 Select the destination folder on the PC.



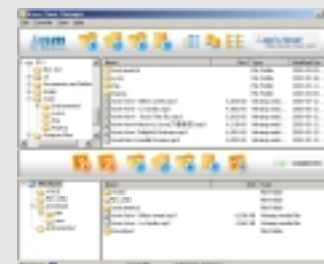
- 3 Click the "Upload" icon or select "Upload" in the Transfer menu to transfer the selected files from the player to your PC.



- 4 Upload is processing.



- 5 Upload is completed.

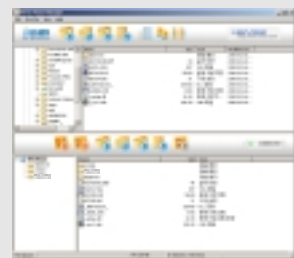
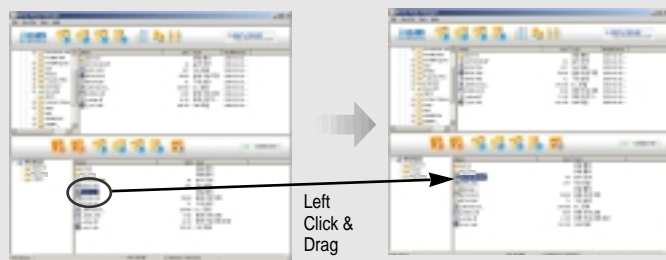


CAUTION

- Music Files (MP3, WMA, ASF) can be uploaded from the player to the PC in accordance with current copyright laws.
- You can upload recorded FM, Line in, or Voice files to your PC as well as any data files. Music files (MP3, WMA, ASF) may not be transferred to your PC from the player.

3) Change position of folders or files on the player

Click and Drag to move folders or files to the desired location.

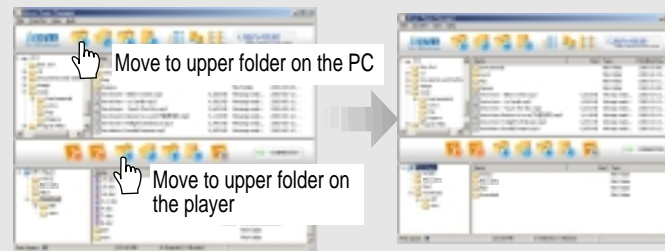


NOTE

- Only one file or one folder moving is allowed.
- Moving more than one file or folder is not allowed.

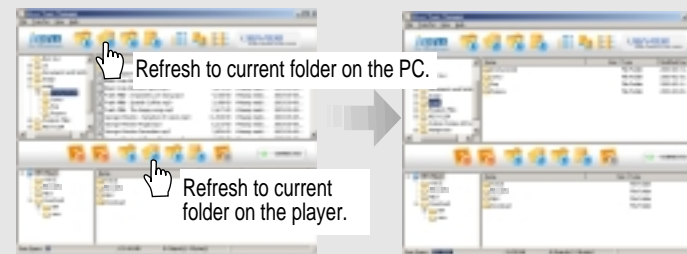
4) Moving to upper folder (PC & Player)

Click the move to "upper folder" icon in the menu bar of the iRiver Music Manager.



5) Refresh (PC & Player)

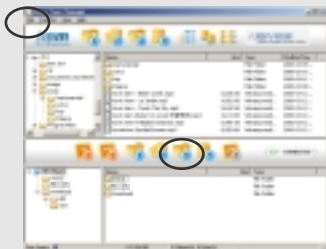
Click the "Refresh" icon to display the contents of the PC or player.



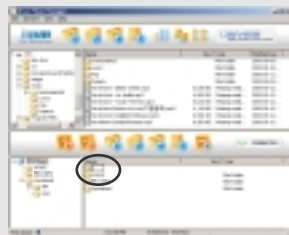
3. Managing files

1) To make a new folder on the player

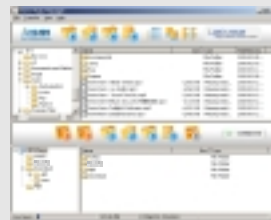
1 Click the "New Folder" icon or select "File-New folder" in the file menu to make a new folder.



2 New folder is created.

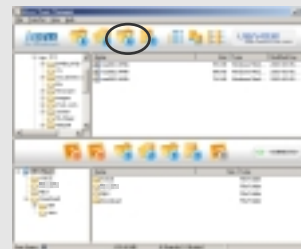


3 Type the name in the new folder.

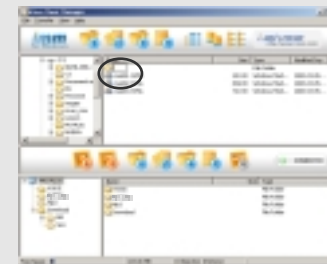


2) Making new folders on the PC

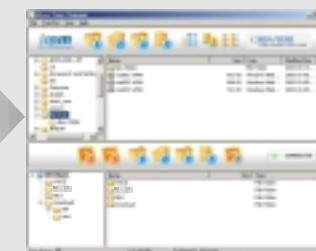
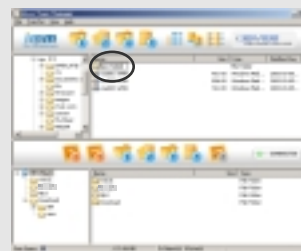
1 Click the "New Folder" icon to make a new folder.



2 New folder is created.

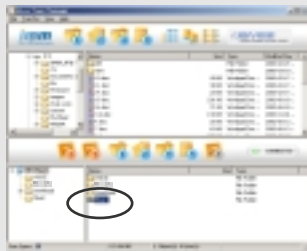


3 Type the name in the new folder.

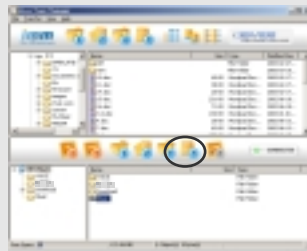


3) Deleting folders or files of the player

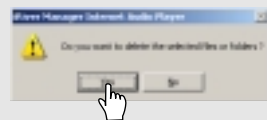
1 After starting the "Manager" program, select the files or folders to delete.



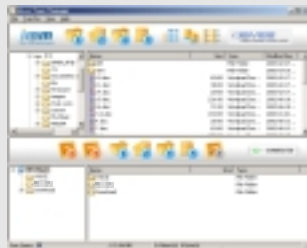
2 Click the "Delete" icon or the menu option "File-Delete".



3 Click "Yes".

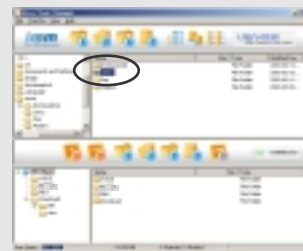


4 Files are deleted.

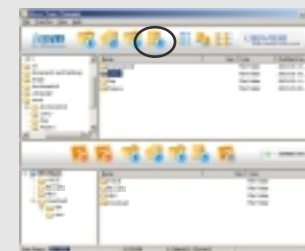


4) Deleting folders or files of the PC

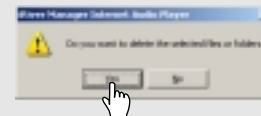
1 After starting the "Manager" program, select the files or folders to delete.



2 Click the "Delete" icon.



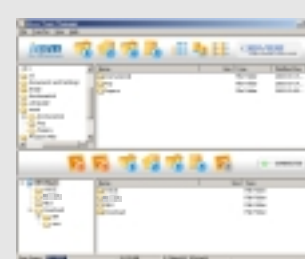
3 Click "Yes".



NOTE

- Note this will delete files permanently from your hard drive. Use with caution.

4 Delete is completed.



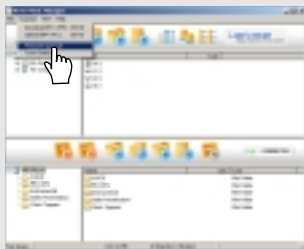
4. Additional functions

1) Upgrading the firmware

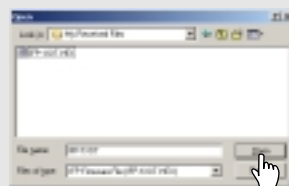
- Download the latest Firmware from our website. Unzip it. Execute the "***.EXE" file. IFP-3XXT.HEX or IFP-3XX.HEX (for iFP-340 only) file is created.



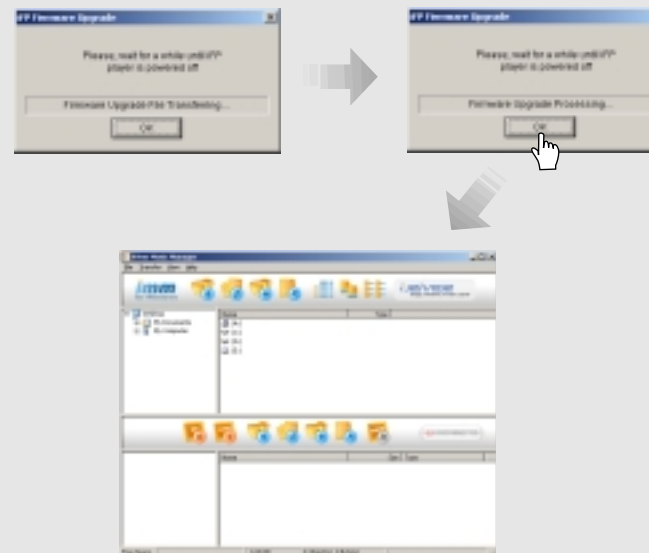
- Click the "Transfer-Firmware Upgrade" menu option.



- Locate and select the IFP-3XXT.HEX or IFP-3XX.HEX file then click Open.



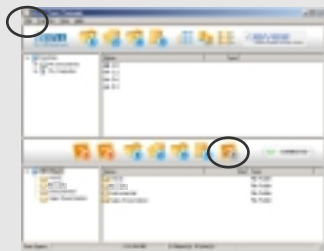
- The window below is displayed as the firmware upgrade is processing. Click "OK" after the player turns off.



2) Format

Format will erase all files in your player memory.

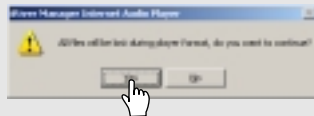
- 1 Click the "format" icon or select "File-format" in the file menu to format.



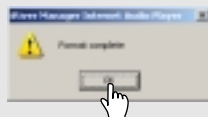
- 2 Click "Start".



- 3 The alert below is displayed. Click "Yes" to initialize.



- 4 Format is completed.

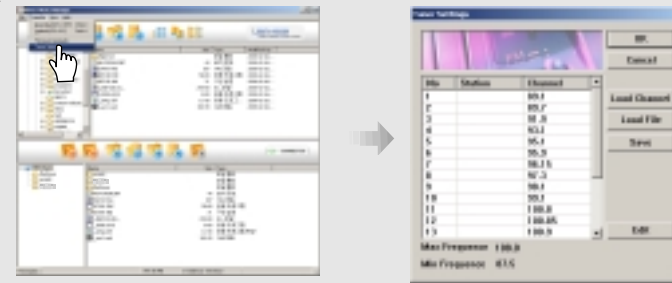


* iFP-340 doesn't feature FM Tuner or Line-in recording.

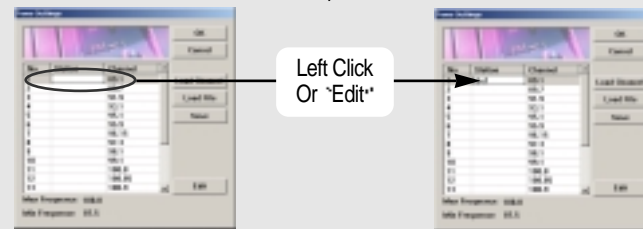
3) Modifying the Radio Stations

You can modify the FM Radio stations with the iRiver Music Manager.

- 1 Select "Transfer-Tuner Setting" in the menu to modify radio channels.



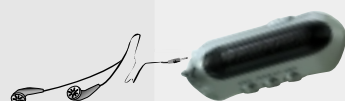
- 2 You can edit the list of your FM stations. You can also load and save different preset files.



NOTE The station name cannot exceed 6 characters including alphabet and number.

Listening to music

1 Connect the earphones as shown below.



2 Put the HOLD switch to "OFF".



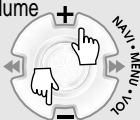
3 Press the PLAY/STOP button to turn on the player. Press it again to play.



4 To select music
 ◀◀: To select previous music
 ▶▶: To select next music



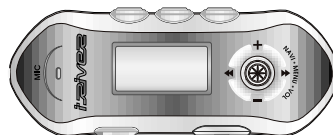
5 To adjust the volume
 + : To increase volume
 - : To decrease volume



NOTE

- When "Hold" is ON, the buttons on the player will not function.
- In case of stop status of MP3 or standby status of Voice recording, the player automatically turns off according to the setting of "STOP POWER OFF" on the MENU. (Refer to page 58)

* iFP-340 doesn't feature FM Tuner or Line-in recording.



■ To turn on the player



■ To play the next folder



■ To play



■ To play the previous folder



■ To change the function (MP3 - FM - Voice recording - LINE IN)



■ To fast forward



■ To stop



■ To fast reverse



■ To advance



■ To turn off the player



■ To reverse



* iFP-340 doesn't feature FM Tuner or Line-in recording.

- While playing MP3, Press and hold the MODE/REC button.



The function selection graphic displays on the LCD.



- Push the button to select FM RADIO. Press the NAVI/MENU button to confirm.



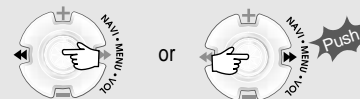
- Press the STEREO/PLAY/STOP button to select Stereo/Mono.



* iFP-340 doesn't feature FM Tuner or Line-in recording.

Tune to your favorite station (FM 87.5~108MHz)

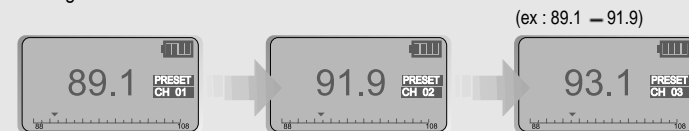
- 1 To change frequency, push the switch to the left or the right. (ex : 87.5 — 87.6)



- 2 **Auto Scan function:** To select a memorized station, press the Navi/Menu button and find the station by pushing the switch to the left or the right.



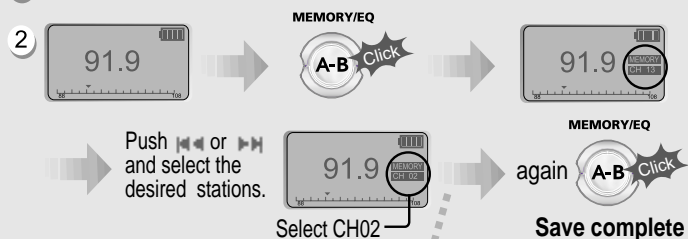
- 3 **PRESET Mode :** To select a station saved in memory, press the Navi/Menu button and find the station by pushing the switch to the left or the right.



* iFP-340 doesn't feature FM Tuner or Line-in recording.

Memory Function (Save stations)

1 Select the station by pushing the ◀◀ or ▶▶ switch to the left or the right.

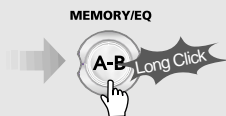


3 Up to 20 stations can be saved.

4 **Auto memory function :**
Automatically select stations
and save them in sequential
order.

(It only activates while the player is not in PRESET mode)

NOTE Auto memory may not work within weak transmission areas.



* iFP-340 doesn't feature FM Tuner or Line-in recording.

Memory delete function (Delete saved stations)

1 Select the station to be deleted at preset mode

2 Press and hold the memory button.



- The next station will appear when station delete is completed.
Push the memory button if you also want to delete the next station.

NOTE


- ▶ FM Tuner reception may vary in different areas.
- ▶ While in Preset mode, auto scan and auto memory functions are not available.
- ▶ When the player doesn't have any preset stations, EMPTY will be displayed at preset mode then fade out.

● Press the PLAY/STOP button to turn the player off.



* iFP-340 doesn't feature FM Tuner or Line-in recording.

To record FM

Press  the MODE/REC button during FM reception.



To stop FM recording

Press  the MODE/REC button again to stop recording.

The recorded file is saved as TUNER000.REC. It is saved in the RECORD folder.



To play a recorded file

After changing to MP3 mode, select a Tuner file in the RECORD folder, press the PLAY/STOP button.

To pause FM recording.


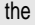
Press  button to pause the recording process. Press  button again to restart recording.

NOTE Volume can not be controlled while recording.

Recording Voice

1 Press and hold the MODE/REC button.



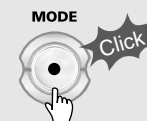
2 Press the  or  switch to select Voice mode.



3 Press the NAVI/MENU button (or PLAY/STOP) to go to Voice recording mode.



4 Press the MODE/REC button and voice recording starts.



To stop recording

- 1 Press the MODE/REC button.

**To play a recorded file**

- 1 Press the PLAY/STOP button.

**To pause voice recording**

Press ►/■ button during recording.
Press ►/■ button again to restart recording.

NOTE

- The recorded file is saved as VOICE00.REC in the VOICE folder.
- If “00:00:00” is displayed on the LCD, the player’s memory is full. To record, delete files and/or folders on the player to make some space available. (Refer to page 11, 26)
- Keep the player far enough away from the source to avoid distortion in the recording.

* iFP-340 doesn't feature FM Tuner or Line-in recording.

Recording from the external audio source

- 1 Connect LINE OUT jack of the external equipment to LINE IN jack of the player.



- 2 Set “Line In Recording Mode” in the MENU. (Refer to p. 60 for details)



- 3 Press and hold the MODE/REC button.



* iFP-340 doesn't feature FM Tuner or Line-in recording.

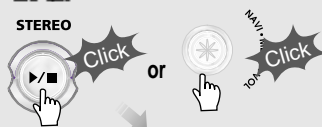
4 Press the or switch to select Line-In mode.



6 Press the MODE/REC button and voice recording is started.



5 Press the NAVI/MENU button (or PLAY/STOP) to go to Line-In recording mode. **Record Standby Mode!**



* iFP-340 doesn't feature FM Tuner or Line-in recording.

To stop recording

1 Press the MODE/REC button.



NOTE The recorded file is saved as AUDIO000.REC, AUDIO001.REC... in sequential order. It is saved in the RECORD folder.

To play a recorded file

< Method 1 >

Press the PLAY/STOP button.

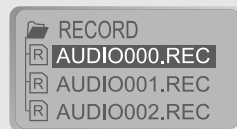
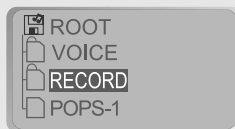


* iFP-340 doesn't feature FM Tuner or Line-in recording.

To play a recorded file

< Method 2 >

1 After pressing the NAVI/MENU button, select a recorded file using VOL + or VOL - button.



2 Press the PLAY/STOP button.



Navigation is the function used to search for tracks.

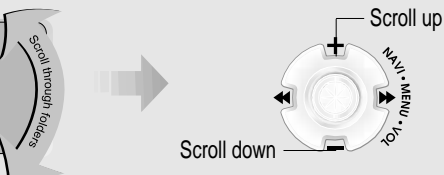
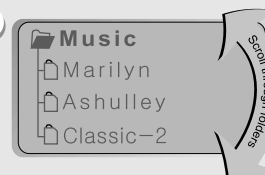


+ You can select a song by pressing the NAVI/MENU button and using the VOL +, VOL - buttons.

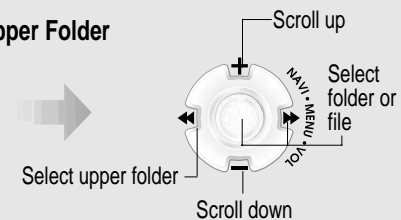
1 NAVI/MENU button



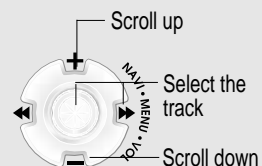
2



3 Select Folder or Scroll to Upper Folder

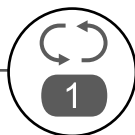
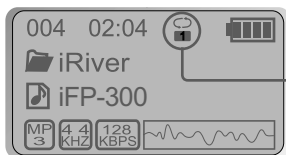


4 Select the track



MODE (Playback Mode)

You can set various Repeat and Shuffle options by choosing these selections under Mode.
Please refer to the function controls (page 61) for user-defined configuration.



◀ When the MODE/REC button is pushed, the icon in the playback mode indicator is changed.

REPEAT

| | |
|--|---|
| | Play a single track repeatedly. |
| | Play all tracks in the folder and stop. |
| | Play all tracks in the folder repeatedly. |
| | Play all tracks in the player repeatedly. |

SHUFFLE

| | |
|-----|--|
| SFL | Randomly play all tracks in the player and stop. |
| SFL | Play a single track repeatedly. |
| SFL | Randomly play all tracks in the folder and stop. |
| SFL | Randomly play all tracks in the folder repeatedly. |
| SFL | Randomly play all tracks in the player repeatedly. |

INTRO

| | |
|--|--|
| | INTRO: Plays the beginning 10 seconds of each track in sequential order. INTRO HIGHLIGHT: Plays 10 seconds from 1 minute into each track in sequential order. You can set this function in the MENU function. |
|--|--|

MEMORY/EQ



- Program mode: Create your own playlists.

Activating Program mode


1 At stop mode

MEMORY/EQ



Scroll to Program mode ▶



- ▶ Program mode is activated while in Stop Mode.
- ▶ Repeat A-B is activated while playing. 

2 Press the NAVI/MENU button, then select the music to program by using the VOL+, VOL - switch.



- ▶ Push the VOL + or VOL - switch to select a folder, then press the MEMORY/EQ button to save all files in the folder. Sub folders are not added.

3 Press the MEMORY/EQ button to save the program list.

MEMORY/EQ



To remove files from the program list.

Press the MODE/REC button after selecting the file to be deleted using the MEMORY/EQ button. The program list is automatically changed.

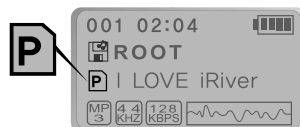
- To delete all programmed songs, press MEMORY/EQ button for a while.

Program Play

After programming, press  to play the tracks in sequential order.



The program mode icon appears



Cancel Program Mode

Press stop then



Interval Repeat

- Play a selected interval repeatedly



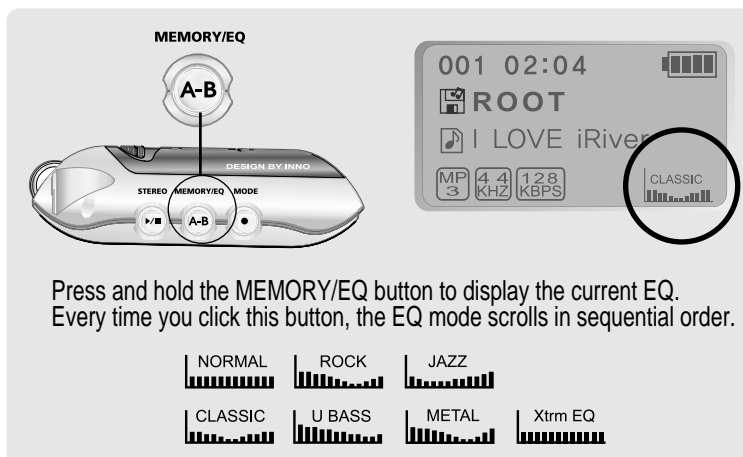
Press button once to select the beginning <A> Point.



Press button again to select the ending Point.


▲ Press button again to cancel.

EQ MODE








Press and hold the MEMORY/EQ button to display the current EQ. Every time you click this button, the EQ mode scrolls in sequential order.

NOTE Please refer to the Function Control (Page 62) for configuring Xtreme EQ.








 Menu is subject to change with different firmware versions.
Users can configure their own settings.

CONFIGURATION



GENERAL

-  beep volume
-  resume
-  fade in
-  language
-  load default









DISPLAY

-  back light
-  lcd contrast
-  visualization
-  scroll speed
-  tag information
-  time
-  battery select




TIMER

-  sleep
-  pwr off

CONTROL

-  fast skip
-  scan speed
-  sound balance
-  eq limit
-  voice recording mode
-  tuner recording mode
-  line-in recording mode
-  line-in record volume



MODE

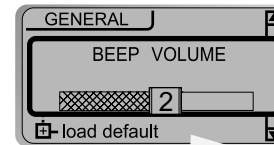
-  repeat
-  shuffle
-  intro

Xtrm EQ

* iFP-340 doesn't feature FM Tuner or Line-in recording.



MENU OPERATION

-  Press and hold the NAVI/MENU button to display the menu system.
-  It is composed of 6 main menus with sub-menus.

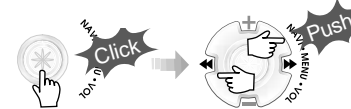


When you select a sub menu, you can set your preference to be displayed.

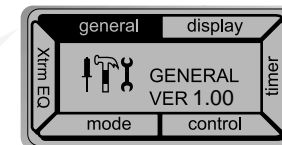
Shift between Menus

Press the  or  button to move between main menu and sub menu.

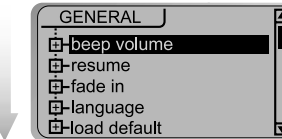
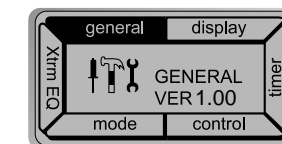
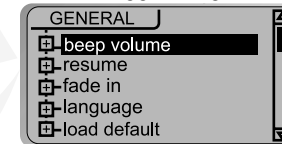
From Main Menu to Sub Menu



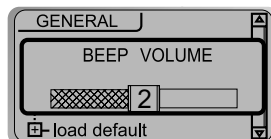
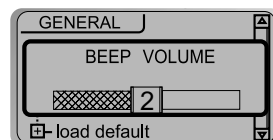
MAIN MENU



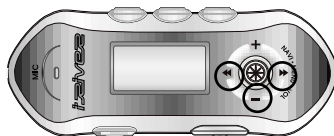
SUB MENU



■ Enter Sub Menu



Three button markings are rather buried with this picture. Maybe enlarge or otherwise highlight those buttons, maybe use the "Hand" icon.



■ Exit Sub Menu



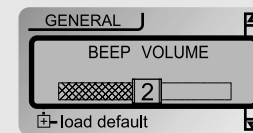
■ Exit Main Menu



GENERAL

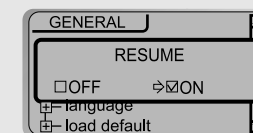
■ BEEP VOLUME

: Set beep volume level. Set to "0" for OFF.



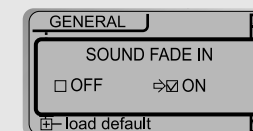
■ RESUME

: When ON, player resumes to previous place in song after STOP or Power OFF.



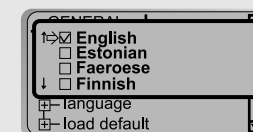
■ FADE IN

: When activated, volume increases gradually at playback mode to prevent sudden loudness.



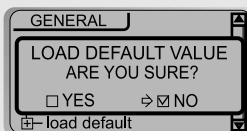
■ LANGUAGE (Supports 39 languages)

: Song title and ID3 tag information for the MP3 files is dependent on the version of the PC operating system that was used to create it. (For example, if a MP3 files is created in a Korean version of Windows, the language setting should be Korean for proper title display)



LOAD DEFAULT VALUE

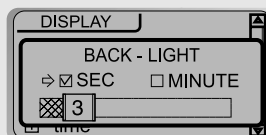
: Initialize Menus to the original factory settings.
 Button operation order is as below.
 Click NAVI/MENU (select default menu) → (select YES) → Click NAVI/MENU (select YES : Initialization)



DISPLAY

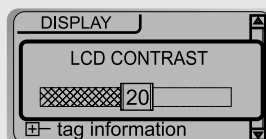
BACK LIGHT

: You can adjust the time that the Backlight stays on.
 SEC : Backlight stays on from 0 to 30 seconds.
 MINUTE : Backlight stays on from 0 to 30 minutes.
 Press the NAVI/MENU button to set SEC/MINUTE.



LCD CONTRAST

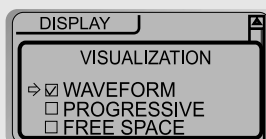
: Adjust LCD contrast of remote control.
 Contrast can be adjusted by using the and buttons.



VISUALIZATION

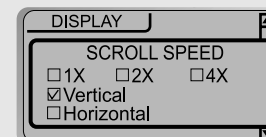
: Can display the visualization of the audio signal in play mode, the elapsed time of a track, or the free space in memory.

WAVEFORM
 PROGRESSIVE 65%
 FREE SPACE 30M



SCROLL SPEED

Adjust scroll speed by 1x/2x/4x/Vertical/Horizontal.
 Vertical : The scroll goes up and down
 Horizontal : The scroll goes from the left to the right.



TAG INFORMATION

On : Display track with ID3 tag information
 Off : Display track with filename



TIME

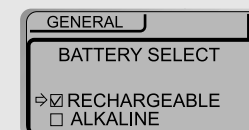
Normal : display elapsed time.
 Remain : display remaining time.

Note : If the track format is VBR, the time may not be accurate.



BATTERY SELECT

: Select the current battery.
 The player will manage the battery indicator icon to better match the usage level.



TIMER (SET AUTO POWER OFF)

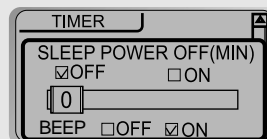
■ SLEEP POWER OFF

: Automatically turns power off after a fixed time. (Time range can be set from 0 to 180 minutes by a minute)

Use the **◀◀** or **▶▶** button to adjust time.

Set BEEP ON/ OFF by pressing the NAVI/MENU button.

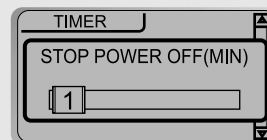
▶ When the power is off, the sleep power off setting goes back to Zero setting.



■ STOP POWER OFF

: Automatically turns power off at stop mode. (Time range can be set from 1 to 60 minutes by a minute)

Use the **◀◀** or **▶▶** button to adjust time.



CONTROL

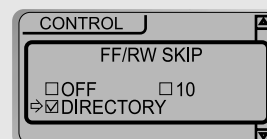
■ FAST SKIP

OFF : Skip doesn't activate.

10 : Skip 10 tracks at time.

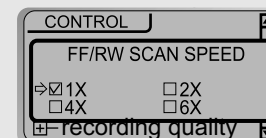
DIRECTORY : Skip to previous or next folder.

This defines the operating method of short or long click of **◀◀** or **▶▶** lever.



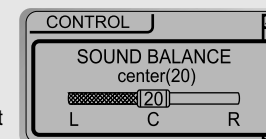
■ FF/RW SCAN SPEED

The fast scan speed can range from 1x/2x/4x/6x.



■ SOUND BALANCE

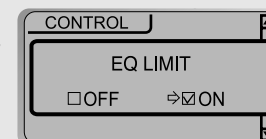
Balance your sound to the right or left or keep it in the center according to your preference. When Sound Balance bar is moved to L (Left, 0), the sound outputs at the left earphone. When the lever is moved to R (Right, 40) the sound outputs at the right earphone. The default value is 20 and the sound outputs the same level at both earphones.



■ EQ LIMIT

ON : Limit the control of equalizer frequency to prevent distortion of sound.

OFF : You can enjoy original sound though distortion of sound may occur.



■ VOICE RECORDING MODE

You can adjust recording quality when recording Voice.

Bit Rate : 8Kbps~160Kbps

Sampling Frequency : 11.025KHz ~44.1KHz

ON : When recording voice, the recording level is automatically controlled and the sound from a long distance is normally recorded.

OFF : AGC Control not activated.



* iFP-340 doesn't feature FM Tuner or Line-in recording.

TUNER RECORDING MODE

You can adjust recording quality when recording from the FM Tuner.

Bit Rate : 8Kbps~320Kbps
Sampling Frequency : 11.025KHz ~44.1KHz



LINE-IN RECORDING MODE

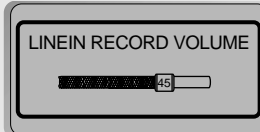
You can adjust recording quality when recording from External equipment.

Bit Rate : 8Kbps~320Kbps
Sampling Frequency : 11.025KHz ~44.1KHz



LINE-IN RECORDING VOLUME

You can adjust recording level when recording from External equipment. (You can set from 0 to 64.)



Setting the Recording Mode

- Voice recording mode/Tuner recording mode/Linein recording mode



1. Select Recording Mode to set.
2. Press the NAVI/MENU button repeatedly to select item(AGC ON/AGC OFF, Mono/Stereo, Sample rate or Bit rate) to set.
3. Set or select AGC ON/AGC OFF, MONO/STEREO, Sample rate or Bit rate using or button.
4. Push the VOL - lever to EXIT repeatedly.

CAUTION You can not record when battery indicator is blinking indicating a low battery.

MODE (PLAYBACK MODE)

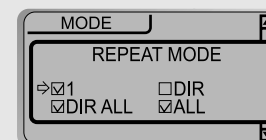
REPEAT MODE / SHUFFLE MODE

: A number of Repeat and Shuffle modes are available. Select the one you want by pressing MODE button (Multi selecting available)

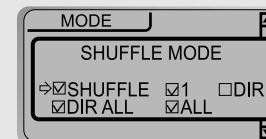
▼ How to select



After push



And button for selection.



And button to exit.



▶ Only the selected play mode will be available when you press the MODE/REC button (For details, please refer p. 46~47)

INTRO MODE

Intro: Plays the beginning 10 seconds of each track.

Intro Highlight : Plays 10 seconds from 1 minute into each track in sequential order.

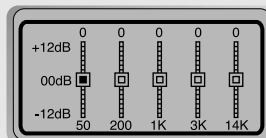


Xtreme EQ

■ Xtreme EQ

You can adjust the sound to your preference.

There are 5 band frequency steps, set from -12dB to +12dB by 3dB step.



■ HOW TO SET Xtreme EQ

1. Select the Frequency step to set using the ◀◀ or ▶▶ button



2. Adjust the level using the VOL + or VOL - button.



3. To exit Xtreme EQ setting



INSERTING A BATTERY

1 Open the battery cover.



2 Insert the battery.
Be sure to match the + and - ends of the battery with the diagram inside the battery compartment.



3 Close the battery cover.



NOTE

- To avoid corrosion, remove the battery if the player is not to be used for a long time.
- Remove dead battery immediately to avoid damage from corrosion.
- When corrosion occurs, wipe the battery compartment immediately with a dry cloth and insert a new battery.

- Should any problem persist after you have checked these symptoms, consult your iRiver dealer or contact support at iRiver.com.

| | |
|--|---|
| No Power | <ul style="list-style-type: none"> ● Check whether the battery have been inserted properly. ● Check whether the HOLD switch on the player is ON (Switch to OFF position) ● Insert a fresh battery. |
| No sound is heard from the player or distortion is heard during playback. | <ul style="list-style-type: none"> ● Check whether VOLUME is set to "0". Connect the earphones/remote plug firmly. ● Check whether plug is dirty. Clean the plug with a dry and soft cloth. ● Corrupted MP3 or WMA files may make a static noise and the sound may cut off. Listen to your files on the PC to see if they are corrupted. |
| Characters in LCD are corrupted. | <ul style="list-style-type: none"> ● Check out Menu ▶ Display ▶ Language and confirm whether the right language has been selected. (Refer to page 55) |
| Poor FM Reception. | <ul style="list-style-type: none"> ● Adjust the position of the player and earphones. ● Turn off the power of other electric devices near the player. ● The Earphone cord functions as the antenna, they must be plugged in for best reception. |
| Failed download of MP3 file | <ul style="list-style-type: none"> ● Check the condition of the battery. ● Check the connection between your computer and the player to ensure that the cable is secure. ● Check the Manager program to make sure it is operating. ● Check whether the player's memory is full. |

SAFETY

■ Avoid dropping or impacting the player.

The player is designed to operate while walking or running, but dropping or excessively impacting the player maybe cause damage.

■ Avoid contacting the player with water.

Damage to the internal parts of the player may occur if the player comes into contact with water. If your player gets wet, dry the outside with a soft cloth as soon as possible.

■ Remove the battery if player is unused for long periods of time.

Battery left in the player for a long time can corrode and damage the device.

ON HEADPHONES AND EARPHONES

■ Road Safety

Do not use headphones/earphones while driving, cycling, or operating any motorized vehicle. It may create a traffic hazard and is illegal in some areas. It can also be potentially dangerous to play your headsets at high volume while walking, especially at pedestrian crossings. You should exercise extreme caution or discontinue use in potentially hazardous situations.

■ Preventing hearing damage

Avoid using headphones/earphones at high volume. Hearing experts advise against continuously loud and extended play. If you experience a ringing in your ears, reduce volume or discontinue use.

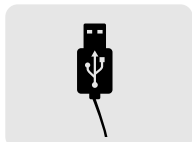
■ Consideration for others

Keep the volume at a moderate level. This will allow you to hear outside sound and to be considerate of the people around you.

1 Earphone/
Earphone cover



2 USB cable



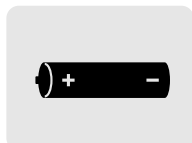
3 Installation CD



4 User Manual/
Warranty card



5 Battery(AA type 1EA)



6 Neck strap for
carrying



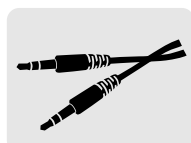
7 Carrying Case
(Not included with iFP-340,
iFP-380T)



8 Arm Band
(Not included with iFP-340,
iFP-380T)



9 Audio Cable
(Not included with iFP-340)



※ Accessories subject to change without notice and may vary from image shown.

※ Distributing copies of MP3 tracks without permission is a violating of international copyright law.

| | | | | |
|---------------------|---------|----------|----------|----------|
| Memory | 64MB | 128MB | 256MB | 512MB |
| Model No. | iFP-340 | iFP-380T | iFP-390T | iFP-395T |
| Tuner | NO | INCLUDED | INCLUDED | INCLUDED |
| MP3 Direct Encoding | NO | INCLUDED | INCLUDED | INCLUDED |

| Category | ITEM | Specifications |
|-------------------------|--------------------|---|
| FM TUNER | FM Frequency range | 87.5 MHz ~ 108 MHz |
| | Headphone Output | (L)12 mW + (R)12 mW (16 Ohm) max. Volume |
| | S/N ratio | 50 dB |
| | Antenna | Headphone/Earphone-Cord Antenna |
| Dimension | | 91 x 35 x 26.7 mm |
| Weight | | Approx. 35 g (without Battery) Approx. 55 g (with Battery) |
| Battery | | 1 AA size Alkaline battery |
| Audio | Frequency range | 20 Hz ~ 20 KHz |
| | Headphone Output | (L)12 mW + (R)12 mW (16 Ohm) max. Volume |
| | S/N ratio | 90 dB(MP3) |
| | Antenna | Headphone/Earphone-Cord Antenna |
| FILE SUPPORT | File Type | MPEG 1/2/2.5 Layer 3, WMA, ASF |
| | Bit Rate | 8 Kbps ~ 320 Kbps |
| | Tag Info | ID3 V1, ID3 V2 2.0, ID3 V2 3.0, ID 3 V2 4.0 |
| | MP3 Encoding | MPEG 1 / 2 / 2.5 Layer3 |
| LCD | | Full Graphic 4 Line with Backlight |
| Language | | 39 Languages |
| Voice Recording | | Approx. 18:20 hrs (8kbps, 64 MB) Approx. 36:00 hrs (8kbps, 128 MB) Approx. 72:00 hrs (8kbps, 256 MB) Approx. 144:00 hrs (8kbps, 512 MB) |
| Max. Playtime | | Approx. 24 hours(128 kbps, MP3, Volume : 20, EQ Normal) |
| USB | | USB 1.1 |
| Operational Temperature | | - 5 degrees ~ 40 degrees Celsius |

MEMO

68

MEMO

69